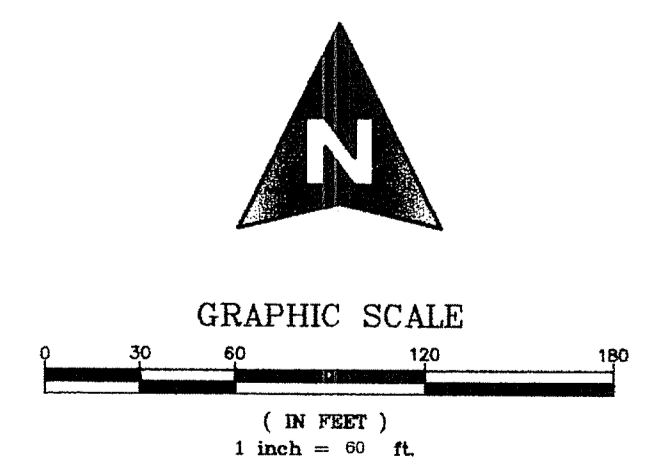
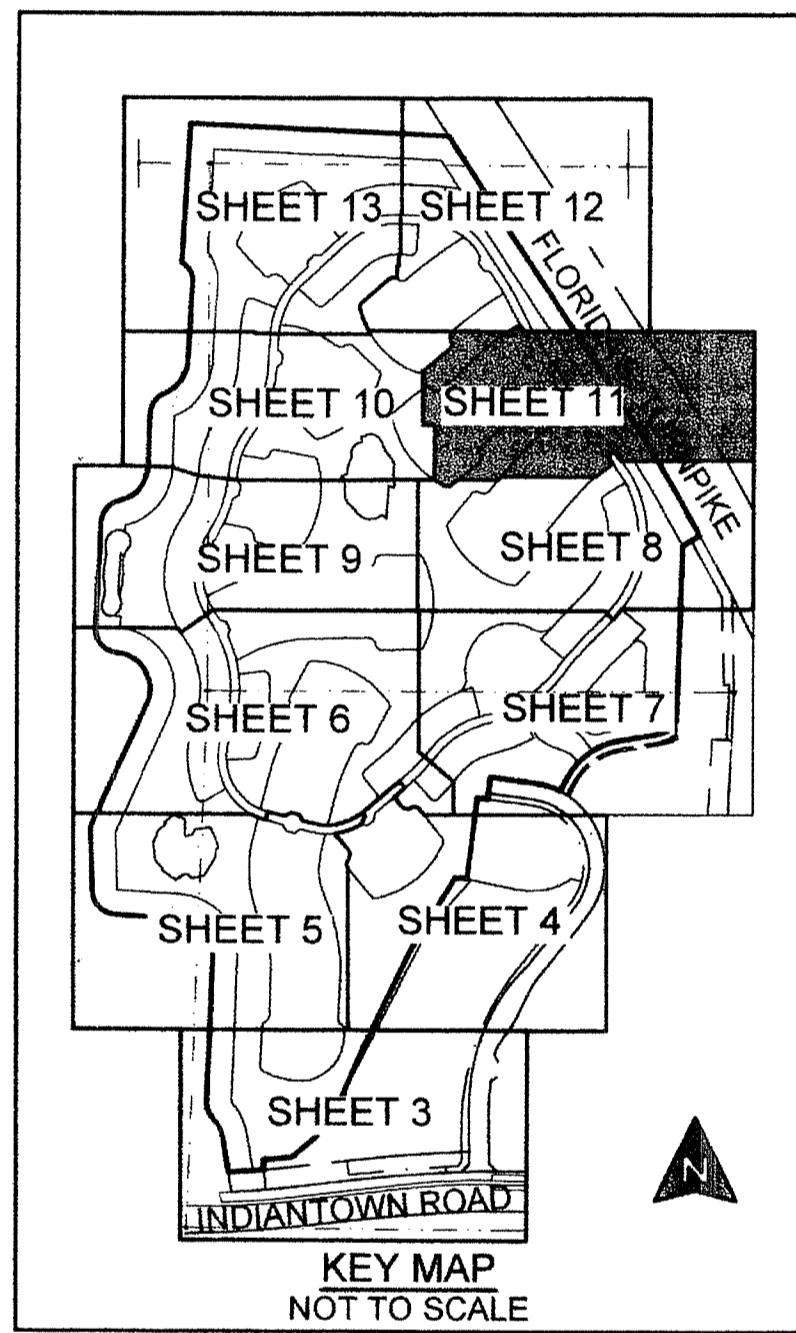
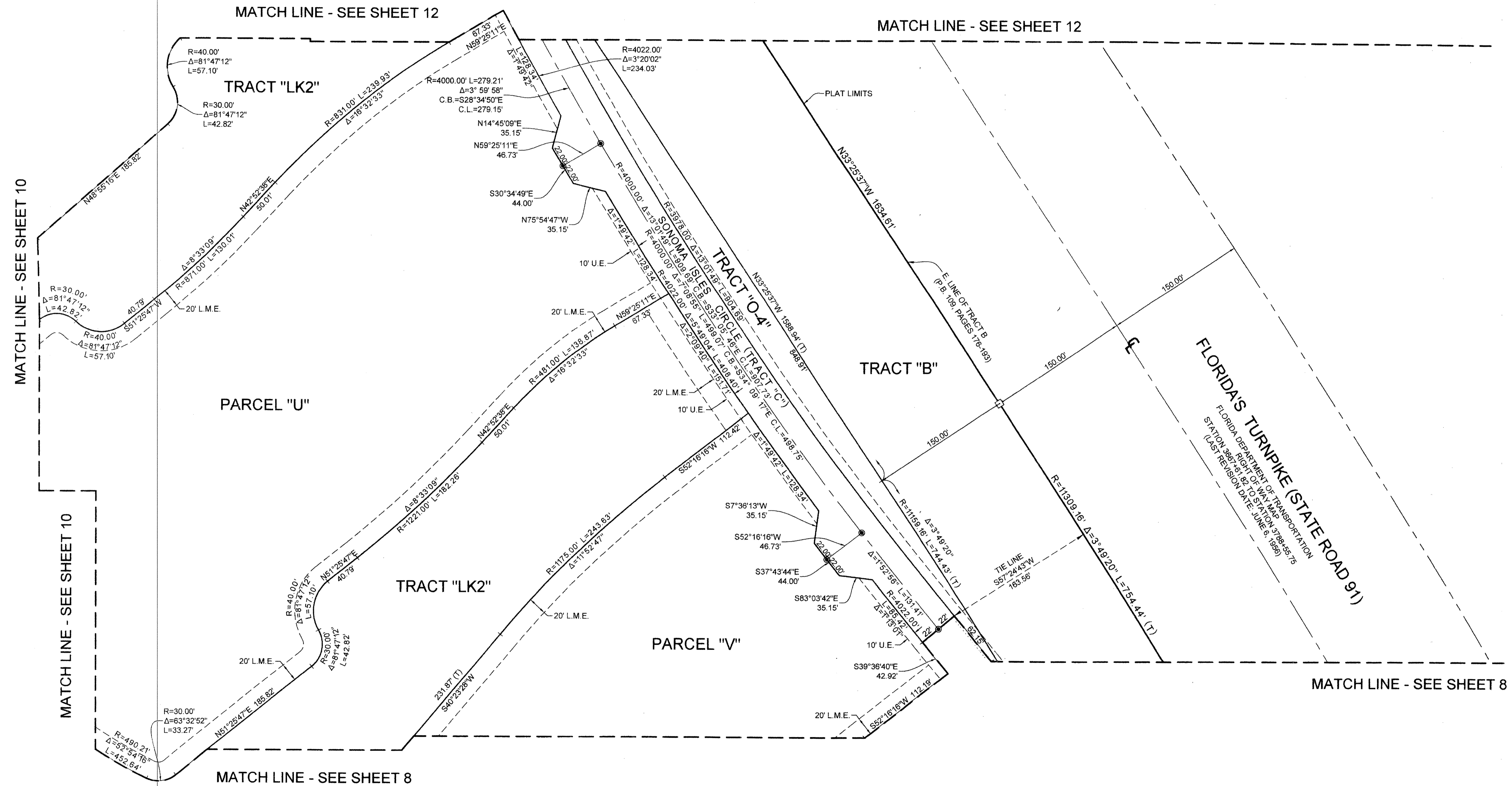


SONOMA ISLES

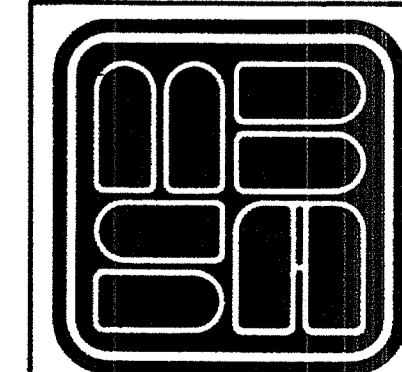
LYING IN SECTION 32, TOWNSHIP 40 SOUTH, RANGE 42 EAST AND SECTION 5, TOWNSHIP 41 SOUTH, RANGE 42 EAST,
 TOWN OF JUPITER, PALM BEACH COUNTY, FLORIDA, BEING A RE-PLAT OF TRACT B, E, H, LK-3, PARCEL 1 AND A PORTION OF TRACT A (MARSALA COURT),
 PLAT OF PARCEL 19 NORTH - PUD, AS RECORDED IN PLAT BOOK 109, PAGES 176 THROUGH 193, INCLUSIVE, PUBLIC RECORDS OF PALM BEACH COUNTY, FLORIDA
 SHEET 11 OF 13 OCTOBER, 2015

177

COUNTY OF PALM BEACH)
 STATE OF FLORIDA) SS
 THIS PLAT WAS FILED FOR RECORD AT _____ M. THIS _____ DAY OF _____ 2015, AND DULY
 RECORDED IN PLAT BOOK NO. _____ ON PAGE _____ THRU _____
 SHARON R. BOCK,
 CLERK AND COMPTROLLER
 BY: _____, D.C.



SHEET 11 OF 13



MICHAEL B. SCHORAH & ASSOCIATES, INC.
 1850 FOREST HILL BLVD., SUITE 206
 WEST PALM BEACH, FLORIDA 33406
 EB# 2438 TEL. (561) 968-0080 FAX. (561) 642-9726 LB# 2438

SONOMA ISLES